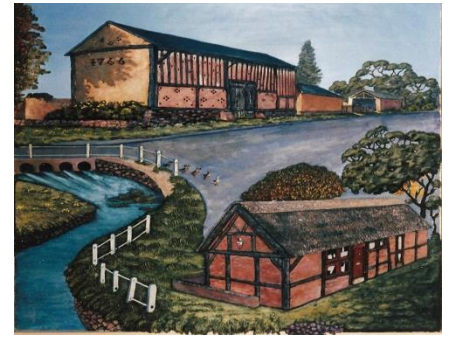


# COSBY PARISH COUNCIL

CLERK: JOHN D. HORSBURGH,  
10 WALNUT LEYS,  
COSBY,  
LEICESTERSHIRE,  
LE9 1TY



0116 2849716  
jdhcosbypc@gmail.com

May 14th 2016

## ANNUAL PARISH COUNCIL MEETING:

The next Meeting of the Parish Council will take place on THURSDAY MAY 19<sup>th</sup> 2016 in the Cosby Community Church Rooms, Croft Road, Cosby.

.....

## AGENDA:

1. Election of the Chairman 2016/2017

The outgoing Chairman Mrs. Chapman will take the Chair for this first item of business as is required by law and will then, if not re-elected, vacate the Chair to the newly elected Chairman who will sign the Declaration of Acceptance of Office at this point.

2. Apologies:

3. Declarations of Interest:

4. Election of Vice Chairman 2016/2017

5. Election of the general Committee 2016/2017

6. Clerk's Position 2016/2017

7. Minutes of the Previous Meeting.

8. Matters Arising:

9. Visit by representatives from Jelson Homes & Bilfinger GVA. & Representatives from C.A.R.D.

I have enclosed for your attention all the letters and e mails I have received on the subject of the Proposals (and the submitted Planning Application) by Jelson Homes to build up to 200 houses on Land off Croft Road.

Also enclosed is the letter received from Bilfinger GVA dated April 22<sup>nd</sup> 2016.

Also resubmitted for your attention is the Report from the Planning Working Group compiled and presented to the December 2015 meeting of the Council.

**There will be a Power Point presentation by Jelson Homes on their proposals at the end of which there will be an opportunity for questions.**

## **10. Replies Received.**

**The following replies have been received.**

- a) Reid's Playground Maintenance Ltd. Ref: Playground repairs.**
- b) Blaby D.C. Ref: S106 Application. The Pinfold.**
- c) Blaby D.C. Ref: Capital Grant. Benches & Bins. £ 2,780.50**
- d) Leicestershire C.C. Highways. Ref: Various Highways issues.**
- e) Leicestershire Police. Ref: Speeding vehicle. Hillview Drive.**
- f) Santander. Ref: Online & Telephone Banking.**
- g) Shelley Signs. Ref: Pinfold Sensory Garden Lectern.**

## **11. Correspondence.**

**The following items of correspondence have been received.**

- a) Post Office: Ref: Proposed Move to New Premises.**

**The Cosby Postmaster Pravin will be at the meeting about this item of correspondence that has been received on the proposals to re-locate Cosby Post Office to Cosby Pharmacy at 67 Main Street.**

- b) Blaby D.C. Ref: News Release - Planning made easier.**
- c) Blaby D.C. Ref: Planning Seminar.**
- d) Blaby D.C. Ref: Register of Electors Update.**
- e) Blaby D.C. Ref: Precept Payment & New Homes figure.**
- f) Blaby D.C. Ref: Dog Control & Signage.**
- g) L. & R. A. L. C. Ref: Blaby Branch Meeting Minutes.**
- h) L. & R. A. L. C. Ref: Blaby Branch Meeting Agenda June 15<sup>th</sup>.**
- i) Charlotte Graham. Ref: Interment in the cemetery.**
- j) NS & I. Ref: Variable Interest Rate changes.**
- k) Wicksteed Leisure. Ref: Unpaid Invoice.**
- l) Lloyds Bank. Ref: Bank Statements.**
- m) Blackrock. Ref: Investment Statement.**
- n) F.I.T. Ref: Fields in Trust AS.G.M. Notice.**
- o) S.L.C.C. Ref: Notice of E.G.M.**
- p) S.L.C.C. Ref: The Clerk Magazine.**
- q) Clerks Direct. Ref: Magazine.**
- r) The Courier. Ref: Magazine.**
- s) Lutterworth & District Journal. Ref: Magazine.**
- t) Blueberry Fencing. Ref; Brochure.**

## **12. The Annual Accounts.**

**The Annual Accounts which will be presented for external audit will need to be approved, and all the relevant documents signed off.**

### 13. Cemetery Working Group.

All the applications for the position of Cemetery Maintenance Operative have been handed to the Working Group.

### 14. Memorials:

To date none have been received.

### 15. Planning Applications.

The following Planning applications have been received.

- |   |   |
|---|---|
| a) Land to the rear of Shuttleworth Grange. | Erection of two detached dwellings.             |
| b) Land off Croft Road.                     | Residential development of up to 200 dwellings. |

### 16. Planning Approvals etc:

### 17. Authorisation of the Accounts.

The following accounts have all been paid.

|   |            |
|---|------------|
| Mrs. J. Chapman. Adverts.   | £ 188.40   |
| Reid's Playground Maintenance Ltd. Playground Inspection.                                     | £ 114.00   |
| Malcolm Lane & Sons. Benches.   | £ 1,932.00 |
| Street Orderly (1) April. (New rate)  | £ 364.43   |
| Street Orderly (2) April. (New rate)  | £ 218.66   |
| Clerk's Salary April. (New rate) £ 1,054 + £12.43 Phone.<br>£ 14.01 Postage. + £ 20.87 Office | £ 1,101.31 |
| Lutterworth & District Journal Advert.  | £ 105.60   |
| The Journal. Advert.  | £ 66.00    |
| Reid's Playground Maintenance Ltd. Playground repairs.  | £ 696.00   |
| D.T.M. Gardens & Landscapes Ltd Invoice No. 6451  | £ 1,002.60 |
| HMRC PAYE & NI Payments. April.   | £ 344.19   |

### 18. Other Business:

.....  
**John D. Horsburgh.**  
**Clerk to the Council.**

